

# Labour Management

Supply

Cloud based solution

Optimize productivity with one solution for entire project

Enhance efficiency by automating employee logistics

Scale up efficiency by digitizing the documents



Streamline the workforce with employee action updates

Instant updates on daily profitability



From the pioneers of Construction ERP,  
**CIMS** serving global clients

**CIMS LSM**  
Labour Supply Management

# Features

## Finance\*



- General Ledger
- Payables
- Receivables
- Labour Supply Invoice Integration

## HRMS



- Interviews
- Government Relations
- Time Office
- Leave Settlement
- Payroll



## Labour Supply Management

- Enquiries
- Proposals
- Work Orders
- Job Orders
- Deployment
- Logistics
- Attendance
- Invoicing

## Camps & Vehicles



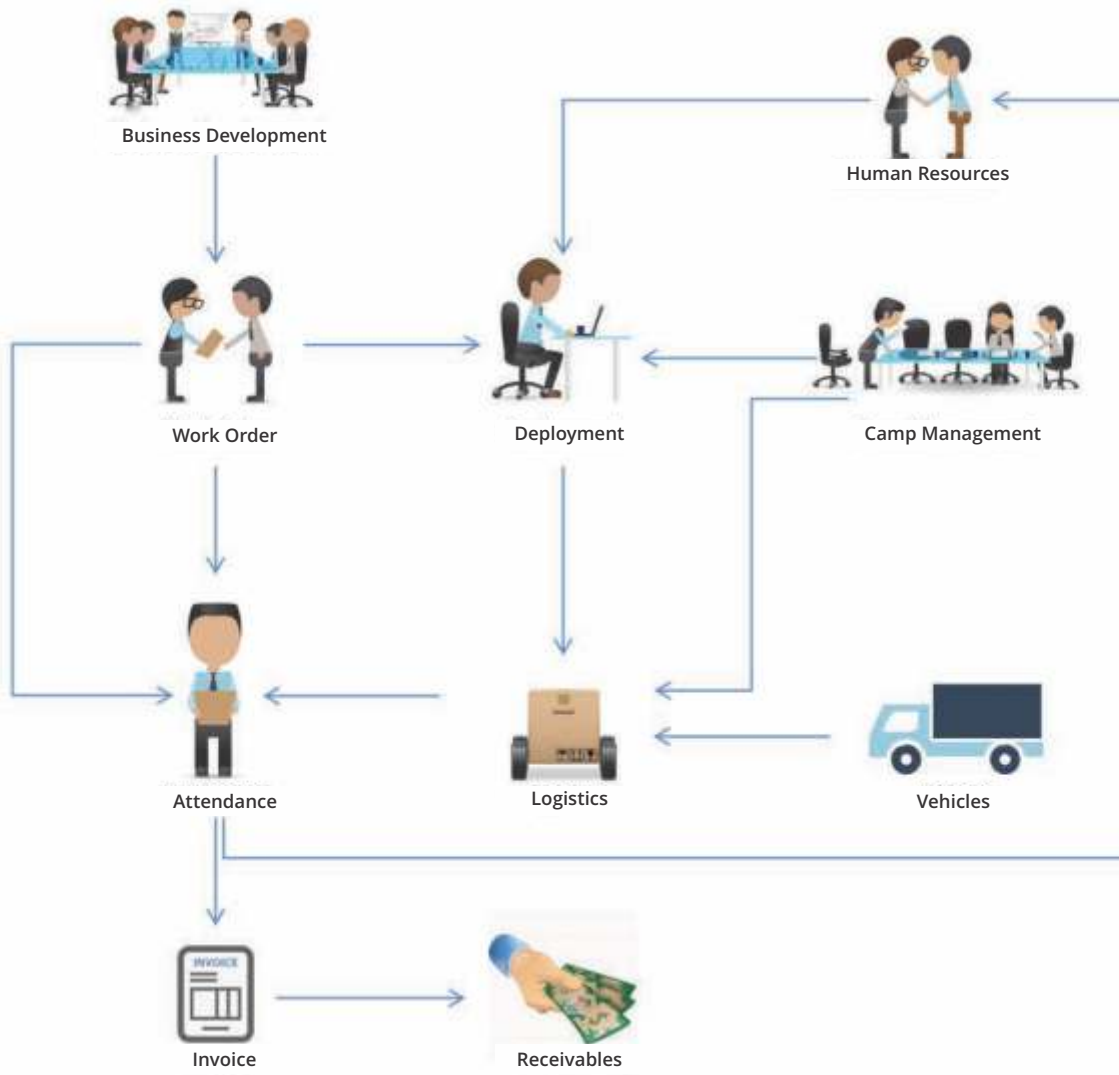
- Structures
- Occupancy
- Camp Assets
- Agreements & Ejari
- Vehicle Trip Sheets
- Vehicle Maintenance

## Inventory \*



- Purchase Requests
- Quotes & Comparatives
- LPO
- Receipts
- Issues
- Invoices
- Stock Management

AN INTEGRATED  
**SOLUTION**  
FOR **LSM**



DEMO COMPANY - [2015]

LABOUR DEVELOPMENT

PROPOSAL JMSB

EMPLOYEE EXPERIENCE

EMPLOYEE COUNT BY NATIONALITY

ADDITIONS / DELETIONS

ON-ROLL STATUS

Trade Name	Description	Unit	Quantity	Rate	Amount
1	Erection Foreman	Hour	1,000	50.00	50,00
2	Welder	Hour	1,000	15.00	15,00
3	Superman	Hour	1,000	150.00	150,00
				<b>Total</b>	<b>215.00</b>

ON-ROLL ACTIVITIES

- General Leave Requests
- Annual Leave Requests
- Dependent Visa Request
- Visa Renewal
- Passport Renewal
- Passport @ AASA
- Passport Renewal Details
- Separation Initiation
- Pay Process



- Terms & Conditions**
1. Mobilization shall be subject to signing of a full Contract agreement and within 48 hours from the mobilization of LPH
  2. Safety Induction (PPE) will be provided by us
  3. Food, Accommodation and transportation will be provided by us
  4. Fuel, Accommodation and transportation will be provided by the client
  5. Dishes, Facilities, Accommodation and transportation will be provided by the client
  6. Food, Accommodation will be provided by us
  7. Mileage (Quantity: 10 to 100 per hour per mile)
- Payment Terms**
1. Payments will be 100 Month from the date of the invoice.
  2. Monthly Invoice, monthly payment
  3. Payment will be on the date of the submission of Invoice
  4. Daily Payment
  5. Security charge must be issued before the commencement of work
  6. Security charge must be issued under the name of AASA HEDGE EAST (PVT. CO. LLC)

# Labour Supply Management



A cloud based solution to tackle the hitches in Labour Supply.



Carefully structured solution to handle the employees right from the recruitment to exit.



With the nominal price /employee LSM is dedicated to save huge money incurred in redundancy, time-cost factor, manual errors etc.



Integration with Finance, Accounts and Inventory modules are provided On Demand.

## Clients



AASA Middle East Contracting Co LLC



Powertech Engineering LLC



Afrina Trading and Construction Company

**URC INFORMATION TECHNOLOGY LLC**

+971-501461543

[sales@urcinfotec.com](mailto:sales@urcinfotec.com) | [www.cimserp.com](http://www.cimserp.com)

India - KSA - Oman - UAE